



MASTECH

SUZUKI VSTROM 250 AT 18 UP

Montaje para Crashbar



Nota:

No apriete todos los tornillos hasta que no estén completamente alineadas todas las perforaciones con respecto a los puntos de sujeción.
Antes de realizar la instalación, verifique todo el manual e identifique que las partes y las piezas estén completas.

Herramientas:

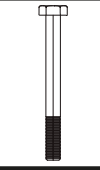


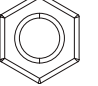
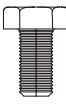
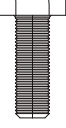
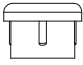
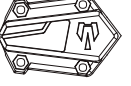
Kit llaves hexágonas
Kit llaves boca fija



Kit Instalado



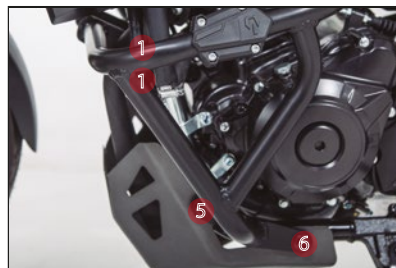
El Kit Contiene:

<p>Tornillo hex M10X100</p>  <p>1</p> <p>Cantidad: 2</p>	<p>Arandela Plana M10</p>  <p>2</p> <p>Cantidad: 6</p>	<p>Arandela Plana M8</p>  <p>3</p> <p>Cantidad: 2</p>	<p>Tuerca de Seguridad M10</p>  <p>4</p> <p>Cantidad: 2</p>
<p>Tornillo hex M8X20</p>  <p>5</p> <p>Cantidad: 2</p>	<p>Tornillo hex M10x30</p>  <p>6</p> <p>Cantidad: 2</p>	<p>Tapón Carenaje</p>  <p>7</p> <p>Cantidad: 2</p>	<p>Juego Abrazaderas inyectadas</p>  <p>8</p> <p>Cantidad: 2</p>

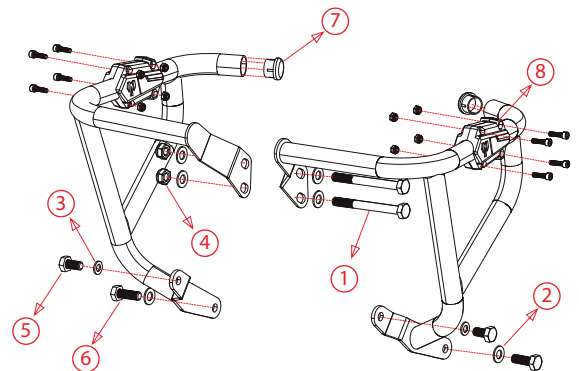
Instalación



1- Primero retire los tornillos originales.
2- Instale la abrazadera inyectada con sus respectivos tornillos y los tapones de plástico



3- Reemplace los tornillos originales por los que se encuentran en el kit siguiendo el esquema (1 5 6)



* El juego de abrazaderas contiene:
4 tornillos M5 - 4 tuercas de seguridad M5 cada una

Al terminar la instalación de las partes, verifique que estén alineadas y que toda la tornillería esté debidamente apretada; reajuste todos los tornillos.

Calle 76 # 52D - 74 / Telefax: (57+4) 448 8428 / Medellín - Colombia

www.mastechno.com



MASTECH

SUZUKI VSTROM 250 AT 18 UP

Assembly Instructions for Crashbar



Note :

Do not tighten the screws until they are completely aligned with the holes.
Before the installation, please verify through the manual that all pieces and parts are complete.

Tools Required:


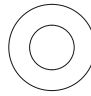
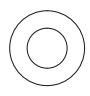
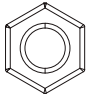
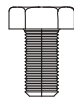
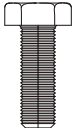
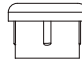
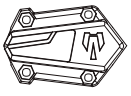
Hex Allen Wrench Set
Combination Wrench Set



Assembled Kit



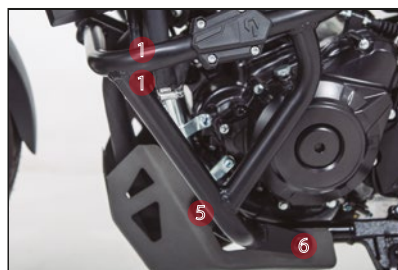
Parts included:

Screw hex M10X100  Quantity: 2	Flat Washer M10  Quantity: 6	Flat Washer M8  Quantity: 2	Safety Nut M10  Quantity: 2
Screw hex M8X20  Quantity: 2	Screw hex M10x30  Quantity: 2	Stoppie crashbar  Quantity: 2	Injected clamps set  Quantity: 2

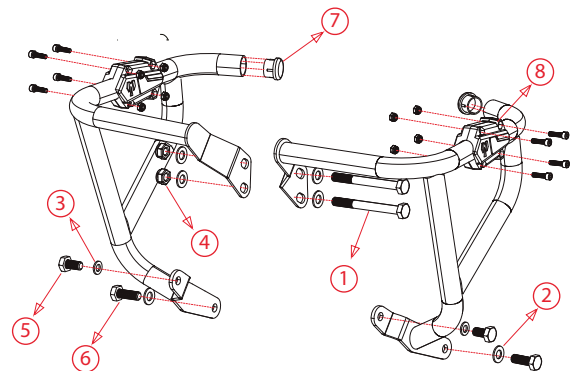
Installation



1- First remove the original screws
2- Install the injected clamp with their respective screws and the plastic plugs



3- Replace the original screws with those found in the kit following the diagram (1)(5)(6)



* The clamp set contains:
4 M5 screws - 4 M5 safety nuts each

After the installation of the parts, please check that they are aligned and that all the hardware is properly tightened